




Champions-System

1. Company Portrait 
2. Surgical Kit & Instruments 
3. **Champions (R)Evolution** *Surgery* 
4. Champions (R)Evolution *Prosthodontics* 
5. Champions Square 
6. Champions Ball-Head 
7. PATENT Zirconia Implant 
8. Smart Grinder 
9. PlasmaSafe 



We are at
your disposal

Mondays, Tuesdays, Thursdays:
7.30 – 18.00
Wednesdays:
7.30 – 16.00
Fridays:
7.30 – 14.00

PHONE:
+49 (0) 6734 91 40 80

FAX:
+49 (0) 6734 10 53

E-MAIL:
info@champions-implants.com

ONLINE-SHOP:
champions-implants.shop

The Champions-Team
(staff clip, scan QR-Code)



TABLE OF CONTENTS

Champions (R)Evolution Implant | Page 4

Hybrid Screws | Page 8

Instructions | Page 10

The products and designations mentioned in this price list are partly protected by trademarks, patents, and copyrights. The absence of a special reference or of the sign “®” or “TM” does not imply that no legal protection exists. You can find an overview via the QR-code.



Manufacturer details according to MDD (Medical Device Directive)/MDR (Medical Device Regulation) are indicated on the product label.



Champions (R)Evolution Surgery



Champions (R)Evolution

The Champions (R)Evolution implant is a rotation-symmetric endosseous two-piece implant made from grade 4 titanium, suitable for a minimally invasive insertion using the MIMI insertion protocol. Supplied with a factory-fitted Shuttle and a Screw, the implant can be placed in all maxillary and mandibular bone quality types (D1–D4), with and without augmentation.



Internal cone of 9.5° and excellent bacteria-resistant implant/ abutment connection

(Zipprich-Study of the University of Frankfurt)

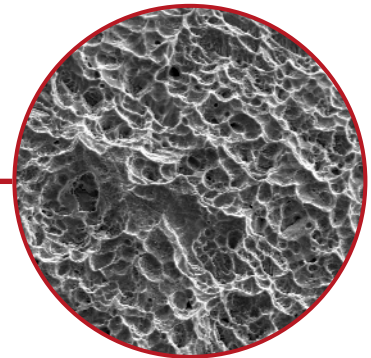
Crestal micro-thread for adequate primary stability

Grade 4 titanium
99 % titanium



Shuttle with 4 functions all-in-one:

- Insertion Aid
- Cover Screw
- Healing Abutment
- Impression Coping



Champions surface – one of the best!

(Study Dr. Duddeck, University Clinic in Cologne)





AVAILABLE LENGTHS AND DIAMETERS

Diameter	Length	Height	REF
3.5 mm	6.5 mm	3.5 mm	0800
	8.0 mm	3.5 mm	0815
	10.0 mm	3.5 mm	0830
	12.0 mm	3.5 mm	0845
	14.0 mm	3.5 mm	0860
	16.0 mm	3.5 mm	0875
4.0 mm	6.5 mm	3.5 mm	0802
	8.0 mm	3.5 mm	0817
	10.0 mm	3.5 mm	0832
	12.0 mm	3.5 mm	0847
	14.0 mm	3.5 mm	0862
	16.0 mm	3.5 mm	0877
4.5 mm	6.5 mm	3.5 mm	0805
	8.0 mm	3.5 mm	0820
	10.0 mm	3.5 mm	0835
	12.0 mm	3.5 mm	0850
	14.0 mm	3.5 mm	0865
	16.0 mm	3.5 mm	0880
5.5 mm	6.5 mm	3.5 mm	0810
	8.0 mm	3.5 mm	0825
	10.0 mm	3.5 mm	0840
	12.0 mm	3.5 mm	0855
	14.0 mm	3.5 mm	0870
	16.0 mm	3.5 mm	0885

Hybrid Screws



Hybrid Screw Georgi GH 0.5

Georgi GH 0.5 is used if there is a Gingival Height of < 2mm or for a submerged implant.

There is no gingiva-forming as the Gingiva-Shuttle with the Gingiva-Clix can be fitted under local anesthesia after 8 weeks at the earliest.

As a rule an exposure of the implant is necessary.

Load-free healing: there are no lateral shear forces on the implant.

ø 3.5 mm, Height: 0.5 mm

Maximum torque: 15 Ncm

Material: grade 5 titanium

REF: 30851

Hybrid Screws Georgi GH 1.5 and Georgi GH 2.5 can be used instead of the Shuttle in cases of a small Gingival Height of < 4 mm or a submerged implant. For using the Hybrid Screws, care should be taken to remove the small Screw and the Shuttle before.

ø 3.9 mm

Height from the implant platform

Maximum torque: 15 Ncm

Material: grade 5 titanium

Hybrid Screw	Diameter	Height	REF
Georgi GH 1.5	3.9 mm	1.5 mm	30853
Georgi GH 2.5	3.9 mm	2.5 mm	30854





Named after Georgi Aleksandrov, a Champions user who has launched the development of Hybrid Screws.

PLACEMENT ACCORDING TO GINGIVAL HEIGHTS:

Georgi GH 0.5

Georgi GH 1.5

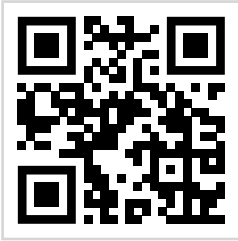
Georgi GH 2.5

Shuttle



Instructions

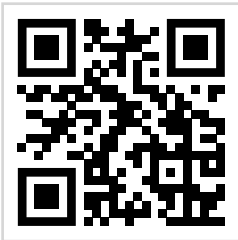
Here you can find films of the Champions (R)Evolution system on the link or scan the QR-Code on your mobile.



MIMI I

Workshop: drilling and insertion

<https://vimeo.com/540071593>



MIMI II

Insertion concept MIMI II with examples, explained by Dr. Nedjat

<https://vimeo.com/440244871>



Champions (R)Evolution implant

What makes this premium implant so revolutionary?

<https://vimeo.com/247333434>



Insertion of a Champions (R)Evolution implant

Workshop: insertion in the D1-/D2-bone

<https://vimeo.com/463736828>



Insertion of 2 Champions (R)Evolution implants

Insertion in the 4th quadrant

<https://vimeo.com/541595198>



Insertion of Champions implants in the lower jaw

Film combined with computer animations

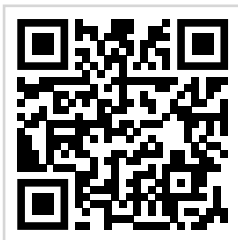
<https://vimeo.com/385224546>



Workshop

Champions (R)Evolution, Gingiva-Clix, Implant Guides

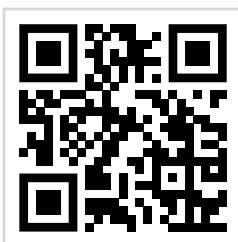
<https://vimeo.com/545487393/c5cb7831af>



Bone Level implantation

Bone Level implantation with a Champions (R)Evolution implant

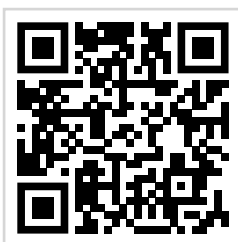
<https://vimeo.com/497585431>



Delayed implantation with Hybrid Screw

Delayed implantation with a Champions (R)Evolution implant and the Hybrid Screw Georgi GH 2.5 in site 45

<https://vimeo.com/449603814>



Surgery and denture in site 46

Delayed immediate implant with X-ray check-ups
5 years after surgery

<https://vimeo.com/437820789>

Welcome
to the
future



Champions-Implants GmbH

Im Baumfeld 30 | Champions Platz 1 | D-55237 Flonheim
tel. +49 (0)6734 91 40 80 | fax +49 (0)6734 10 53
info@champions-implants.com
champions-implants.com